

## NH fuse switch-disconnector size 00, 160 A, bus-mounting (33 198)



### Description

#### Article

Part No.: 33 198

QUADRON® 60Classic

NH fuse switch-disconnector size 00, 160 A, bus-mounting  
connection box terminal, outgoing terminal bottom/top

#### System

60Classic

Product group 09

Subgroup 24

pack size 1

EAN 4021267331986

## Advantages of the product

CrossLink® adapter technology

Fast and safe conversion of the connection for top or bottom; the parts under voltage remain shock protected

Simple and safe clicking into place and making contact

Safe connection through shock protection split into two

Busbar supports for flat busbars can be mounted above each other

**Catalog page** 2015 : 2/23, 2/29

**eCl@ss 6.1** 27142108

**eCl@ss 7.1** 27142108

**ETIM 4.0** EC001040

**ETIM 5.0** EC001040

## Approvals

### Standards

IEC 60947-1:2007 + A1:2010 + A2:2014

IEC 60947-3:2008 + A1:2012

### Approvals

IEC (CB), Germanischer Lloyd, VDE, CCC



Type number: QCB-NH00

CCC certificate: 2010010302403934

## Product data

### Electrical data

Rated current (IEC): 160 A

Rated voltage (IEC) AC: 690 V

Rated voltage (IEC) DC: 440 V

Utilisation category AC-21B (690V)  
AC (IEC 60947-3) : AC-22B (500V)  
AC-20B (1000V) at pollution degree 2

visible information required if used at more than 690V AC: do not switch under load

Utilisation category DC specifications: 2 current paths (L1,L3) in series  
DC (IEC 60947-3) : DC-21B (220V)  
DC-21B (440V/100A)  
DC-22B (220V/63A)  
DC-20B (1000V) at pollution degree 2

visible information required if used at more than 440V DC: do not switch under load

#### Power dissipation:

The power dissipation at a typical load of 80% of the rated current results to 11.3 W.  
(The power dissipation for operation with rated current would be 17.7 W.)

rated isolation voltage  $U_i$  (AC): 800 V  
Rated surge voltage  $U_{imp}$  : 6 kV  
max. permitted voltage (IEC) AC: 800 V  
max. permitted voltage (IEC) DC: 800 V

cond. rated short-circuit current with fuses: 50 kA / 690V  
approved with fuse links of characteristics: gG

for fuse links IEC 60269-2 / DIN VDE 0636-2 size 00 up to 12W power dissipation

In accordance with the specified AC and DC switching properties and in consideration of the overload conditions, certain distances to earthed metal parts are to be adhered to. detailed information upon inquiry

When several devices are used side-by-side in continuous operation, the rated load factor specified in IEC / EN 61439-1, Table 1, must be observed.

System component: degree of protection IP30 at front as per DIN EN 60529, degree of protection near terminal depends on installation

adapter module: front side degree of protection IP20 as per DIN EN 60529 (finger-safe)

## Mechanical data

W x H x D: 106 x 200 x 97

Weight: 100 kg/100

Poles: 3-pole

front degree of protection: IP30

Busbar connector: externally tensioned contacting, convenient click mechanism, simple conversion of the combination bases from 5 to 10mm-thick busbars

## Terminal points

Box terminal:

1,5 -70mm<sup>2</sup> flexible cables, directly or with wire-end ferrules\*, depending on contour of the insulated lead 95mm<sup>2</sup> could be connectable

1,5 -10mm<sup>2</sup> solid round

16 -70mm<sup>2</sup> stranded round

2x10mm<sup>2</sup>, 2x16mm<sup>2</sup> and 2x25mm<sup>2</sup> flexible with wire-end ferrules, identical cables placed side by side, crimping square

2x 10-35mm<sup>2</sup> flexible identical cables placed side by side

la. Cu. 9-13 mm wide

Terminal space 13mm x 13mm

(\*flexible cables of maximum cross-section may not fit when using wire-end ferrule)

## Material properties

Main body: temperature stability 125°C,  
self-extinguishing in acc. to UL 94,  
creepage resistance CTI 200,  
halogen-free

Shock protection cover: temperature stability 125°C,  
self-extinguishing in acc. to UL 94,  
creepage resistance CTI 200

Handle: temperature stability 125°C,  
self-extinguishing in acc. to UL 94,  
creepage resistance CTI 200

Adapter plate: temperature stability 125°C,  
self-extinguishing in acc. to UL 94,  
creepage resistance CTI 200,  
halogen-free

Contacts: spring-loaded copper contacts, silver plated

**Version**

Variant with M8 connection screws 33 398

Variant with electronic fuse monitoring 33 324

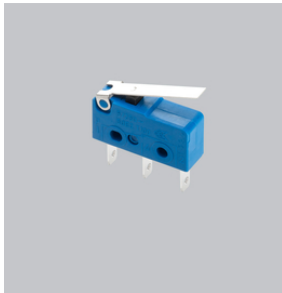
Variant with electromechanical fuse monitoring 33 206

## Accessories



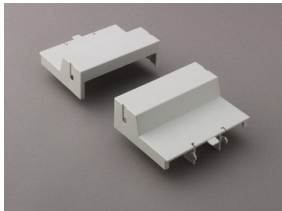
### **03 849**

lid interlock  
for sealing wire  
Size 00



### **33 156**

pilot switch for lid position  
pilot switch: 250V AC / 5A; 30V DC / 4A  
Size 000, 00, 2, 3



### **33 315**

trim cover, 2 parts  
for NH-LTS size 00  
size 00



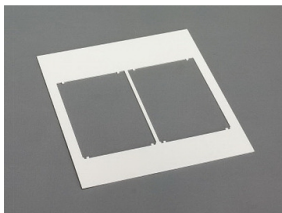
### **33 317**

trim strip  
for NH-LTS size 00  
size 00



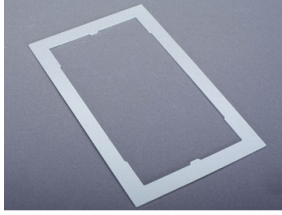
### **33 915**

connection for auxiliary line  
flat connector DIN EN 61210 6,3x0,8  
size 00



### **78 105**

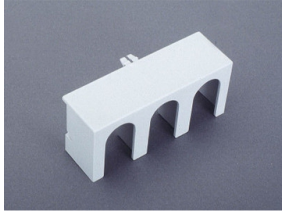
Trim frame, double  
232 x 210, not for 33221, 33222  
size 00

**78 893**

Trim frame, single

130 x 210, not for 33221, 33222

size 00

**79 811**

cover for connecting space

for 33 200, 33 208, 33 329, 33 394, 33 398, 33 420

size 00